



Delivering Excellence in Automotive Exports



Company Website

AUTOMOTIVE PRODUCT CATALOGUE | 2025



AUTOMOTIVE PARTS | CUSTOM DEVELOPMENT | LOW MOQ SOLUTIONS

COMPANY IDENTITY



ABOUT THE COMPANY

MGE Auto Private Limited is a trusted Indian exporter and development partner for precision-engineered automotive spare parts and assemblies. Founded in 1999, MGE brings over 25 years of experience in supplying OEM-type and custom-developed components for two-wheelers, three-wheelers, passenger, and light commercial vehicles.

With exports to 45+ countries across Africa, Latin America, Europe, and the Middle East, MGE has earned a strong reputation for quality, reliability, and engineering precision. Its flexible supply and development network across North India enables complete export solutions — from product design and development to quality inspection, packaging, and shipment — ensuring consistent standards and customer confidence in every order.

Supported by an in-house technical and inspection team, MGE provides end-to-end component development from drawings, CAD models, or buyer samples. The company's diversified capabilities include sheet-metal fabrication, CNC/VMC machining, rubber and plastic molding, die-casting, electrical assemblies, wire braiding, and linkage parts, all validated through structured inspection and batch-wise quality checks.

MGE Auto is a registered member of EEPC India, FIEO, and MSME, and holds ISO 9001:2015 and ZED Bronze Certifications for quality and sustainable business practices. Every product is 100% Indian-origin compliant, backed by transparent documentation and ethical trade standards.

VISION, MISSION & CORE VALUES

Vision: To be recognized globally as a preferred source for precision automotive components — trusted for quality, reliability, and innovation.

Mission: To deliver world-class automotive parts and development solutions through continuous improvement, strong supplier partnerships, and transparent business practices that empower global importers and distributors.

Core Values: Trust & Transparency: Building long-term relationships through integrity and reliability.

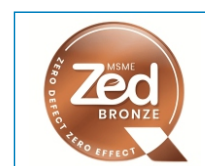
Quality & Precision: Engineering every part to meet or exceed OEM expectations.

Customization & Innovation: Developing new products quickly from buyer drawings or samples.

Sustainability & Responsibility: Committed to ethical sourcing and eco-conscious packaging.

Customer Success First: We grow by ensuring every customer's satisfaction and success.

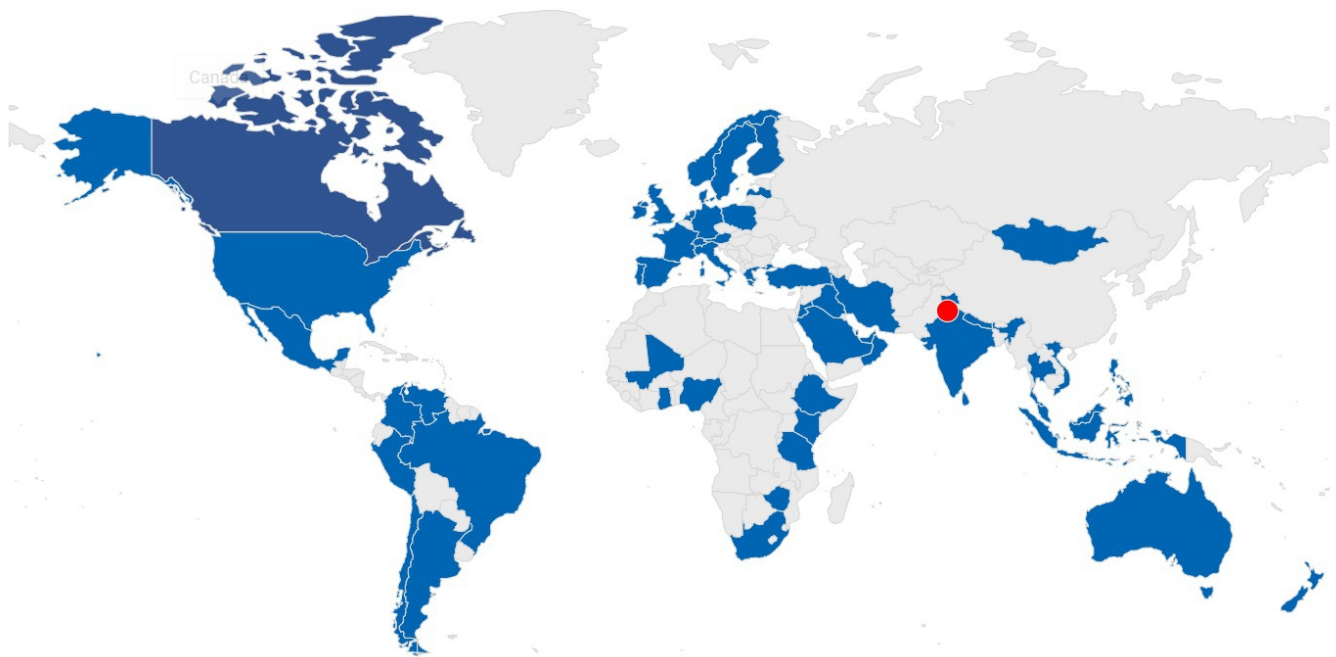
QUALITY STANDARD & PROFESSIONAL MEMBERSHIPS



OUR ESTEEMED INDIAN CUSTOMER



GLOBAL PRESENCE



CAPABILITIES & QUALITY OVERVIEW

Function

Highlights

Engineering & Development	CAD/CAM design, reverse engineering, and rapid prototyping
Production Network	Trusted partner units for machining, molding, casting, and assembly
Inspection & QC	Dimensional checks, coating tests, and pre-dispatch batch inspections
Packaging & Logistics	Custom-branded export packing, labeling, and barcoding
Customer Support	Dedicated export team for technical communication and documentation

“Our strength lies in coordination, precision, and performance — a distributed network delivering centralized quality.”

WHY CHOOSE MGE AUTO



Exporting In 20+
Countries



Most Trustable Brand
over 1000+ happy customers



ISO 9001:2015
Compliance



European Quality Standards
Export Quality Checks



Pan India Network
Sourcing from 3000+ cities



In-House Manufacturing
Completely Made In India

COMPANY HISTORY TIMELINE



1999

MG Enterprises was founded by Mr. Gulshan Malhotra and Mrs. Geetu Malhotra with the mission to supply high-quality automotive spare parts.



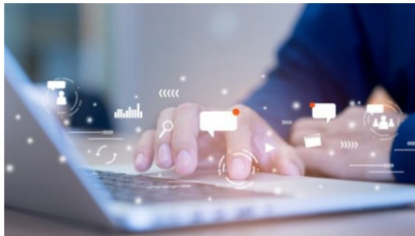
From 1999 to 2013

MG Enterprises exclusively served the Indian market, collaborating with top-notch companies and export houses.



2013

MG Enterprises expanded its market presence by entering into the exports market.



2014

The company established its online presence, enhancing accessibility to customers worldwide.



2015

In-house Research and Development (R&D) and production lines were established for each product category, emphasizing quality control and innovation.



2023

MG Enterprises achieved a significant milestone by becoming Original Equipment (OE) suppliers, with Royal Enfield (Eicher Motors) as its first customer.



2024

MG Enterprises underwent a structural transformation and converted to a private limited company, operating under the name MGE Auto Private Limited.



2030

The company aspires to become Punjab's biggest export house for automotive parts and a leading provider of customized development solutions.

OUR PRODUCT RANGE OVERVIEW

TWO-WHEELER & THREE-WHEELER SPARE PARTS & COMPONENTS



SHEET METAL PARTS DEVELOPMENT & CUSTOM FABRICATION



RUBBER PARTS & MOLDED COMPONENTS



PLASTIC INJECTION & MOLDED PARTS



ELECTRICAL & ELECTRONIC AUTOMOTIVE COMPONENTS



LINKAGE PARTS



DIE- CAST COMPONENTS & PRECISION-ALUMINIUM PARTS



BEARINGS



HAND TOOLS & LUBRICATION EQUIPMENTS



OUR PRODUCTS

TWO-WHEELER & THREE-WHEELER SPARE PARTS & COMPONENTS



SHEET METAL PARTS DEVELOPMENT & CUSTOM FABRICATION



RUBBER PARTS & MOLDED COMPONENTS

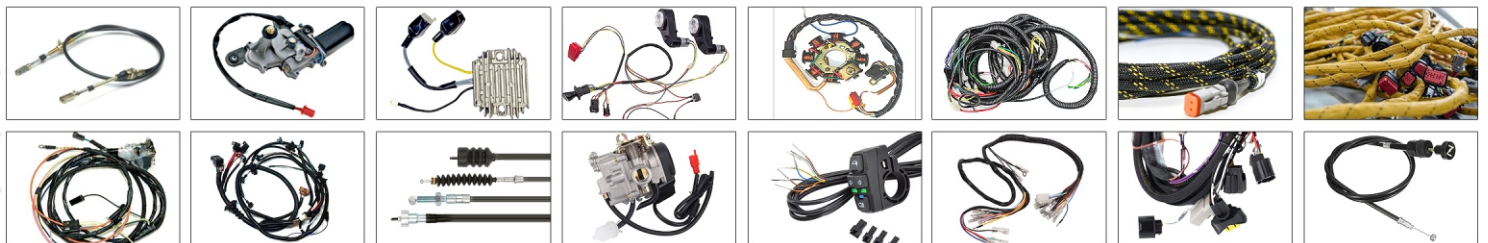


OUR PRODUCTS

PLASTIC INJECTION & MOLDED PARTS



ELECTRICAL & ELECTRONIC AUTOMOTIVE COMPONENTS



LINKAGE PARTS, PINS & ASSEMBLIES



OUR PRODUCTS

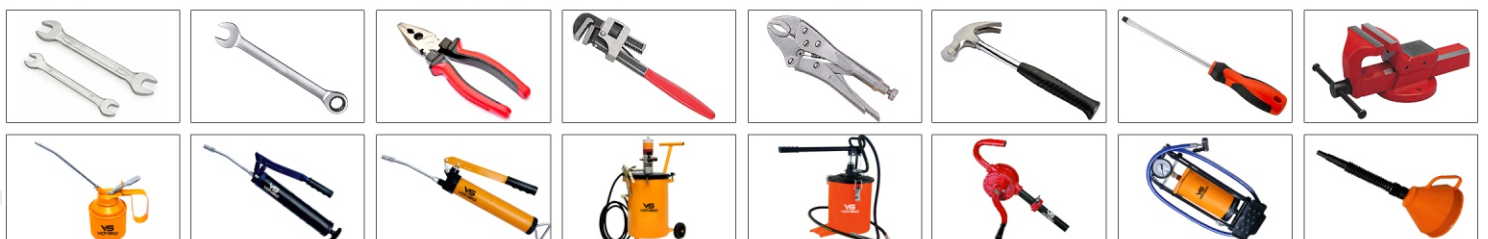
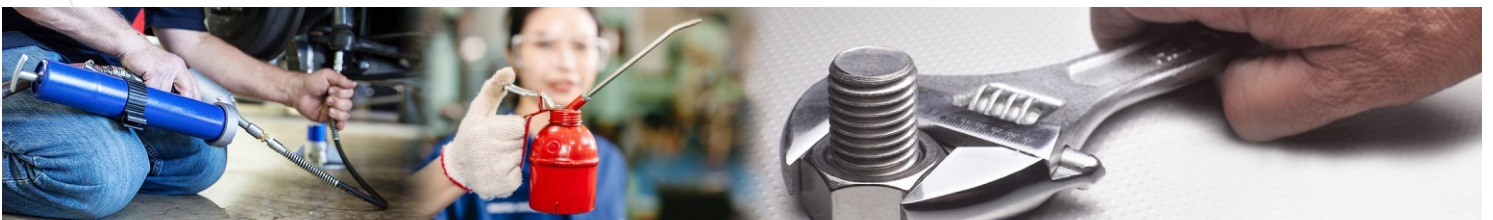
DIE-CAST COMPONENTS & PRECISION-ALUMINIUM PARTS



BEARINGS & BEARING ASSEMBLIES



HAND TOOLS & LUBRICATION EQUIPMENT



CUSTOM PARTS DEVELOPMENT & ENGINEERING SOLUTIONS

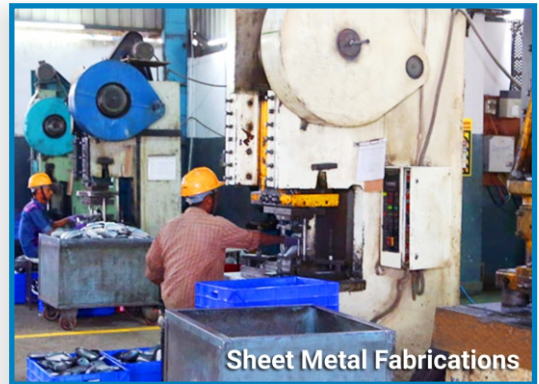


We specialize in developing precision-engineered components as per buyer drawings, CAD models, or physical samples. Our in-house engineering and inspection team ensures quality, accuracy, and reliability — from concept to final production.

OUR INFRASTRUCTURE



CNC/VMC Facilities



Sheet Metal Fabrications



Wire Braiding Facilities



Rubber Moulding Division



Electronic/Electrical Division



Plastic Moulding Division

ORDERING PROCESS & PAYMENT TERMS



INQUIRY

QUOTATION

ORDER

PRODUCTION

INSPECTION

DISPATCH

DOCUMENTATION

DELIVERY

At MGE Auto Private Limited, our goal is to make every order simple, transparent, and reliable — from initial inquiry to final delivery. Each order is handled with meticulous attention to detail, ensuring consistent quality, timely communication, and smooth logistics.

Minimum Order Quantity (MOQ)

- MOQs are flexible and product-specific, depending on item category, tooling requirements, and production cycle.
- For custom developments, MOQs are determined during the design and sampling stage based on technical feasibility.
- MGE supports trial consignments and small evaluation orders for new customers to build long-term business confidence.

Lead Time

- Standard parts: Normally dispatched within 30–45 days after order confirmation.
- New developments or customized parts: Typically 60–75 days including design, sampling, and approval.
- Urgent requirements: Partial or express dispatches can be arranged upon request. All shipments are subject to strict pre-dispatch inspection and packaging verification to ensure consistency and safety.

Payment Terms

For new clients:

- 50% advance at order confirmation
- Balance 50% before shipment (after inspection and packing approval)

For established partners:

- Negotiable flexible terms such as 30% advance and 70% before dispatch, or L/C arrangements for high-volume business.
- Payment modes: Bank transfer via SWIFT / TT, fully supported by compliant export documentation.

Packing & Shipping

- Products are packed in export-grade boxes, wooden crates, or customized branded cartons depending on weight and material.
- Shipments can be handled under FOB, CIF, C&F, or Door Delivery terms.
- Preferred transport modes include sea freight for bulk shipments and air freight for urgent or high-value goods.

Documentation & Quality Assurance

- Each shipment is accompanied by Invoice, Packing List, Certificate of Origin, and other necessary export documents.
- Fumigation, labeling, and barcoding provided as per destination country requirements.
- Visual inspection photos and videos can be shared for buyer records prior to dispatch.
- MGE Auto builds trust through precision, transparency, and consistency — every order is treated as a long-term partnership.

SPACE FOR NOTES



Digital Catalogue



Company Website



Chat on WhatsApp



MGE AUTO PRIVATE LIMITED

#95 - 96, Star Colony, Star School Road
Lohara - 141016, Ludhiana, Punjab (India)
Mobile: +91-86696-00001, +91-89688-65566
Website: www.mgexportsindia.com
E-mail: info@mgexportsindia.com